

# Core acceptance criteria

## AXLE MODULATOR



**ECO** LOGICAL  
NOMICAL



**WABCO**  
REMAN SOLUTIONS

# General information

## ACCEPTED



- Core must be in an off-vehicle condition.
- Core must meet acceptance standards established within this document.
- Acceptable part numbers:

Axle Modulator Gen I	Remanufactured Axle Modulator Gen I
480 103 XXX 0	480 103 XXX R

- Core must be younger than CW01 2000

## REJECTED



- The core is a not complete unit and disassembled or altered in any manner.
- The core is damaged by non-operational causes such as car crash damage, rough handling, fire or improper removal, crack, stuff losses.
- There has been prior attempt at rebuilding the component.

# Acceptance criteria

## ACCEPTED



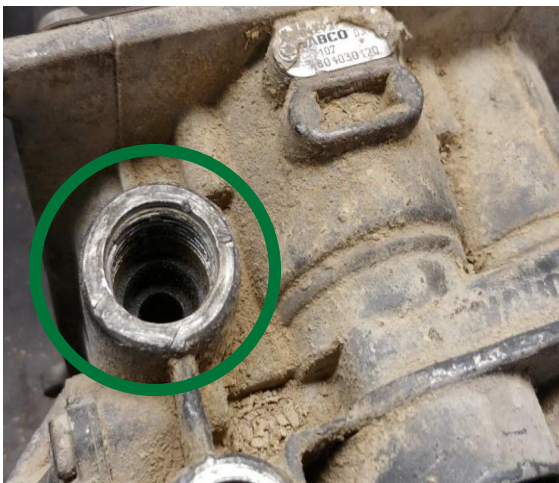
Small scratches on the body, silencer and covers



## ACCEPTED



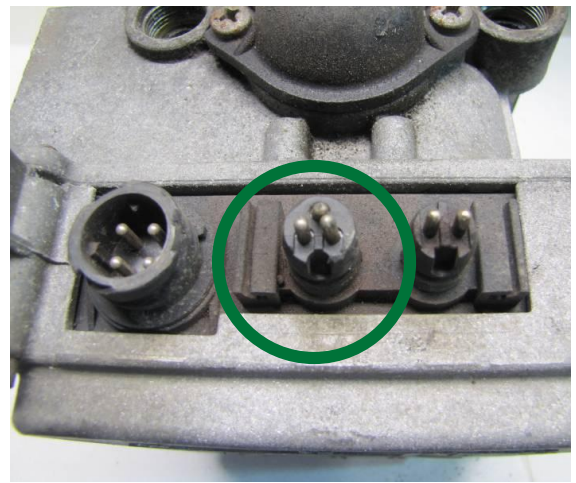
Damaged ports



## ACCEPTED



Bent Pins, Scratches on connector

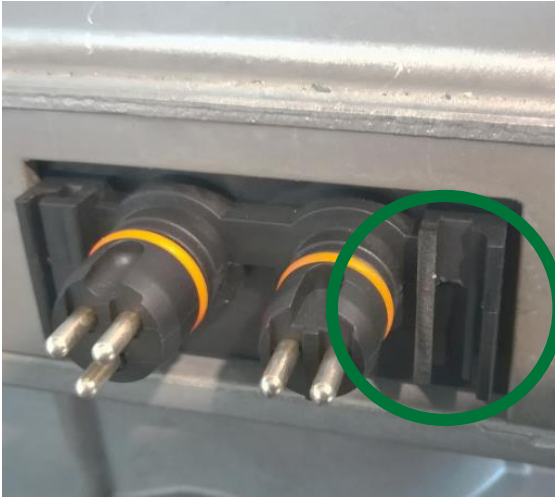


# Acceptance criteria

**ACCEPTED**



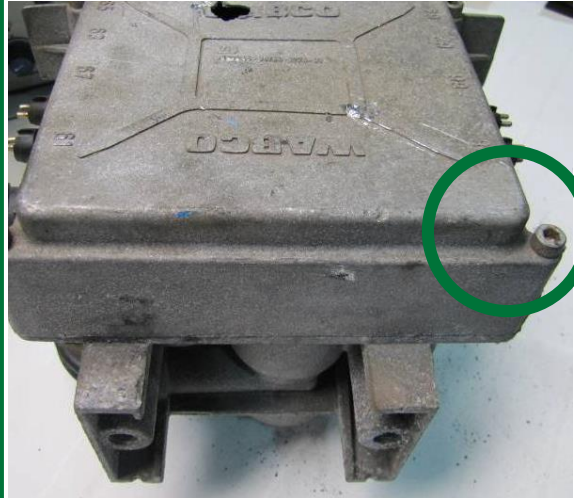
Broken part of connector frame



**ACCEPTED**



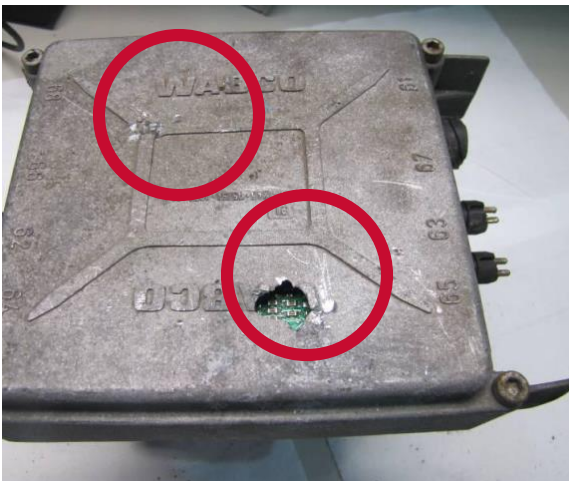
Cutted, damaged or missing cover flips



**REJECTED**



Serious damages or signs of hit on the external surfaces, missing material





# Your used part can go for *a second life!* Return it to WABCO and get your refund!

When you buy remanufactured part from WABCO Reman Solutions and return your used cores to us, you will get a **refund!** On top of that, by producing less waste, you will also **save on costs of disposal** and **benefit the environment.**



## THIS IS HOW IT WORKS:

- **Use the box** of the remanufactured parts to return your used cores.



- **Contact your authorized WABCO partner**  
[www.wabco-auto.com/findwabco](http://www.wabco-auto.com/findwabco) to pick up the box.
  - **You will receive a refund** for the surcharge you've paid with the purchase of your remanufactured parts.
- It's as simple as that!**

For more info, see myWABCO  
<https://www.am.wabco-auto.com>

**WABCO**  
REMAN SOLUTIONS